

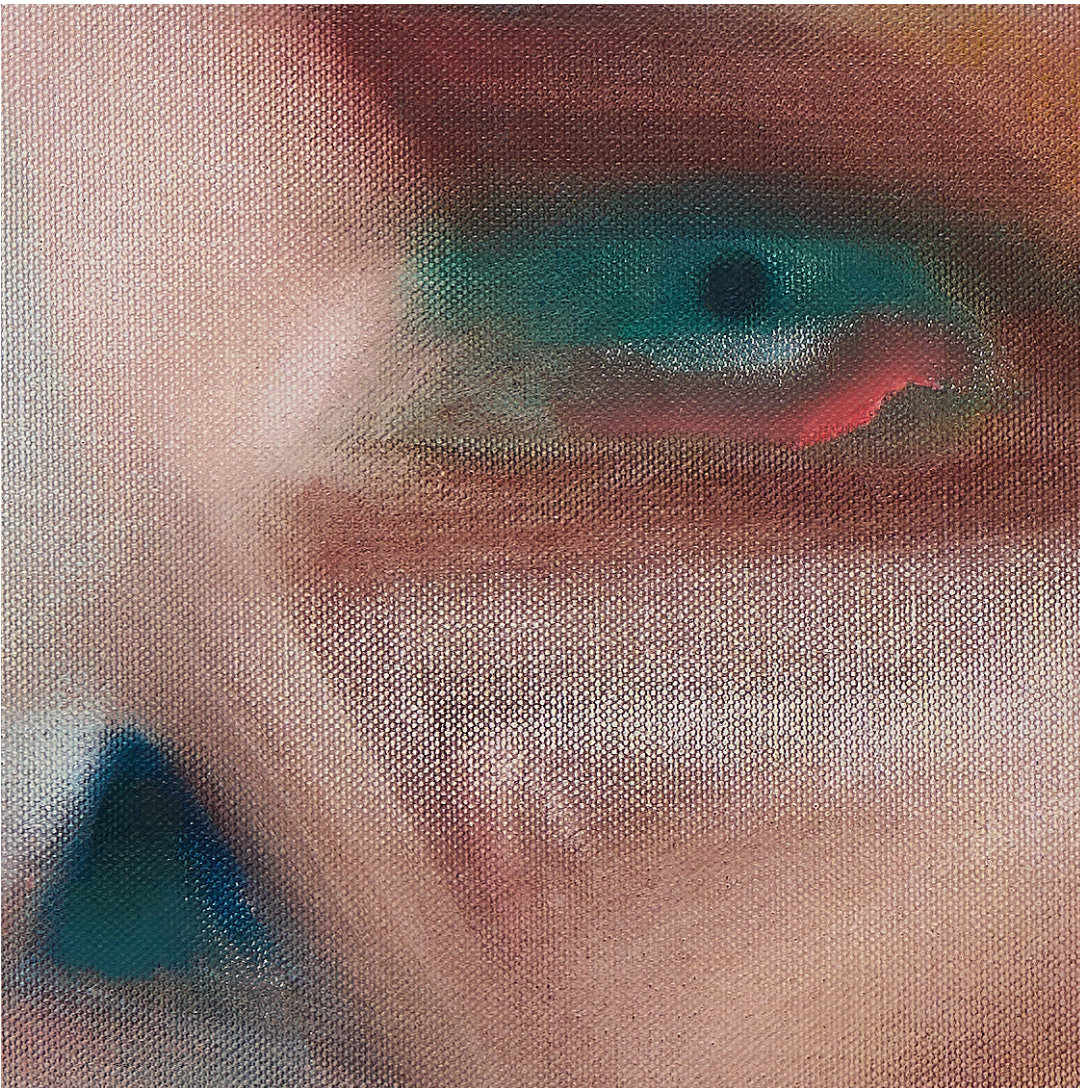
Untitled (Zai no.1)

2023

Oil on canvas
H162.2xW130.5cm
Unique

TK-23-003-P

Toshiyuki Konishi depicts people, using bold and extended strokes to drastically reduce details, referring to photographs of his family and friends. The physically rendered strokes are traces of the repeated exchange between thought and body, in which nostalgic landscapes are renewed and approaches towards the borderline between reality and fable. In his work, the face is the indication of a trajectory that gradually opens and expands from the intimate to the external world.



(Detail)
Untitled (Zai no.1)

2023
Oil on canvas
H162.2xW130.5cm
©Toshiyuki Konishi

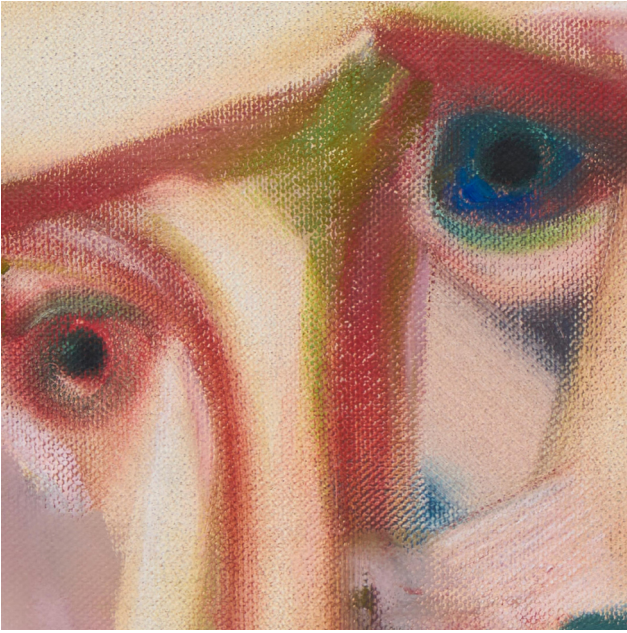


Untitled

2024

Oil on canvas
H100.2xW80.5cm
Unique

TK-24-002-P



(Detail)
Untitled

2024
Oil on canvas
H100.2xW80.5cm
©Toshiyuki Konishi

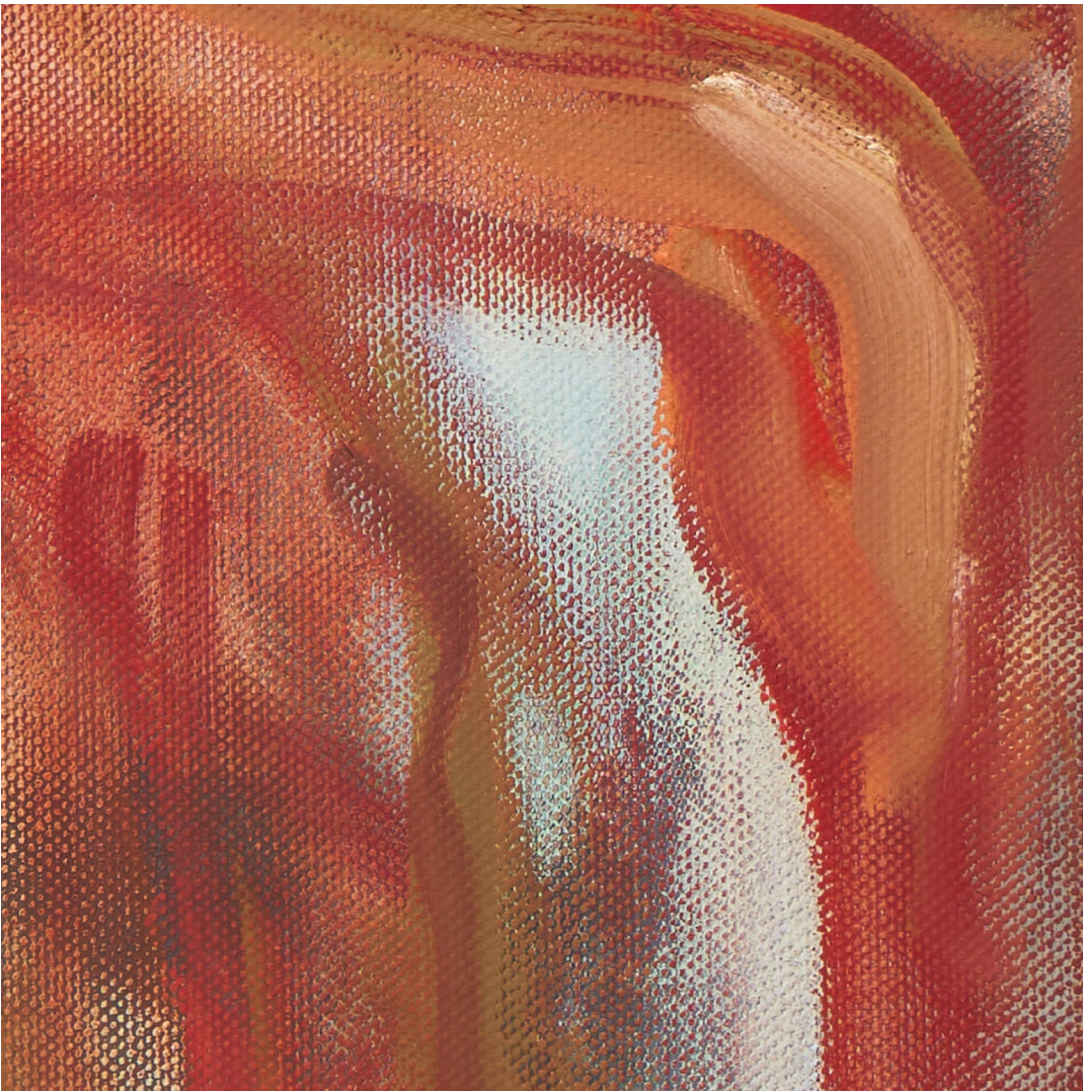
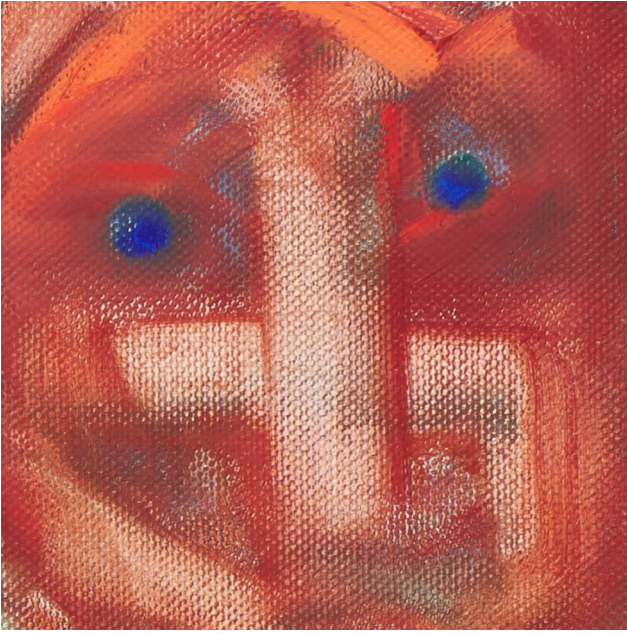


Untitled

2024

Oil on canvas
H130.5xW66cm
Unique

TK-24-006-P



(Detail)
Untitled

2024
Oil on canvas
H130.5xW66cm
©Toshiyuki Konishi



Untitled

2024

Oil on canvas

H41×W41×D2 cm

Unique

TK-24-009-P



Untitled

2024

Oil on canvas

H130.5xW97.4cm

Unique

TK-24-005-P



Untitled (Hitoha no.1)

2022
Oil on canvas
H27.5xW27.5cm
Unique
TK-22-010-P



Untitled (Zon no.1)

2022, Oil on canvas, H41xW32.1cm
Unique TK-22-005-P



Untitled

2024, Oil on canvas, H33.5xW24cm
Unique TK-24-007-P



Untitled

2024, Oil on canvas, H33.5xW24cm
Unique TK-24-008-P

KONISHI Toshiyuki (b.1980)

His recent exhibitions are “The Way of Painting”, Tokyo Opera City Art Gallery (Tokyo, 2014); “Nostalgia and Fantasy: Imagination and Its Origins in Contemporary Art”, The National Museum of Art (Osaka, 2014); “Collection 2 – Diary”, 21st Century Museum of Contemporary Art, Kanazawa (Ishikawa, 2018); “YOKOHAMA TRIENNALE 2017: Islands, Constellations & Galapagos”, Yokohama Red Brick Warehouse No.1 (Kanagawa, 2017); “Collection – Asian Landscapes”, 21st Century Museum of Contemporary Art, Kanazawa (Ishikawa, 2018); “Under Current”, Powerlong Museum (Shanghai, 2022); “Collection Exhibition 1 It knows : When Forms Become Mind” 21st Century Museum of Contemporary Art, Kanazawa (Ishikawa, 2023); “The lens within your heart from the TAKEUCHI COLLECTION”, WHAT MUSEUM (Tokyo, 2023); “A Personal View of Japanese Contemporary Art : Takahashi Ryutaro Collection”, Museum of Contemporary Art Tokyo (Tokyo, 2024) and more.

He was nominated as the finalist for the Prudential Eye Awards in 2016.



(Reference)
“Collection Asian Landscapes”
Installation view, 21st Century
Museum of Contemporary Art,
Kanazawa, Ishikawa, Japan, 2018
photo by KIOKU Keizo
Courtesy of 21st Century
Museum of Contemporary Art,
Kanazawa ©Toshiyuki Konishi



(Reference)
“YOKOHAMA TRIENNALE 2017: Islands,
Constellations & Galapagos” Installation
view, Yokohama Red Brick Warehouse
No.1, Kanagawa, 2017
photo by Ichiro Mishima ©Toshiyuki Konishi