



Untitled

2025

Oil on canvas
H194.5xW162.5cm
Unique

TK-25-001-P

Toshiyuki Konishi depicts people, using bold and extended strokes to drastically reduce details, referring to photographs of his family and friends. The physically rendered strokes are traces of the repeated exchange between thought and body, in which nostalgic landscapes are renewed and approaches towards the borderline between reality and fable. In his work, the face is the indication of a trajectory that gradually opens and expands from the intimate to the external world.

<https://anomalytokyo.com/en/artist/toshiyuki-konishi/>



(Detail)

Untitled

2025
Oil on canvas
H194.5xW162.5cm
©Toshiyuki Konishi



Untitled

2025

Oil on canvas

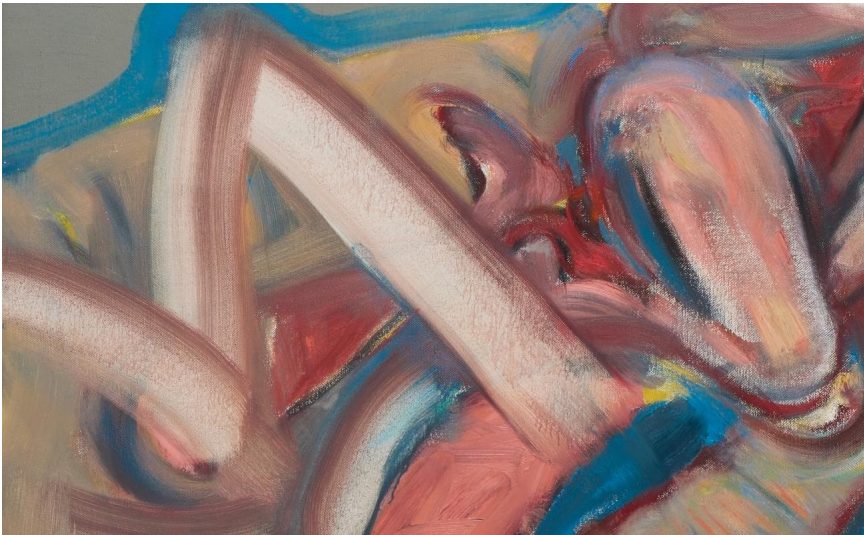
H194.5xW162.5cm

Unique

TK-25-002-P

(Detail)
Untitled

2025
Oil on canvas
H194.5xW162.5cm
©Toshiyuki Konishi





Untitled

2025

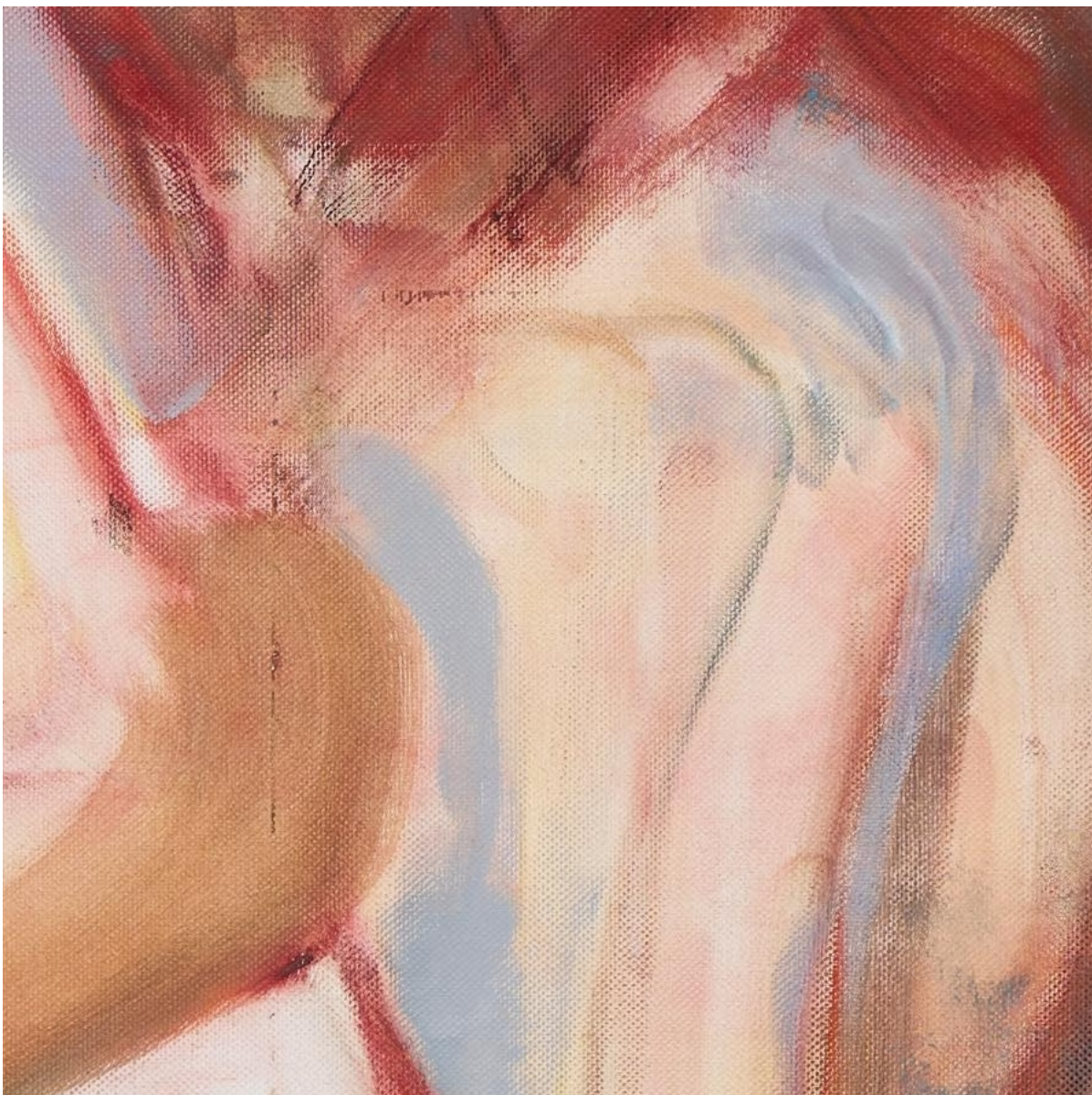
Oil on canvas
H182.5×W73.4cm
Unique

TK-25-003-P



(Detail)
Untitled

2025
Oil on canvas
H182.5xW73.4cm
©Toshiyuki Konishi





Untitled

2025

Oil on canvas
H130.8×W162.5 cm
Unique

TK-25-004-P



Untitled

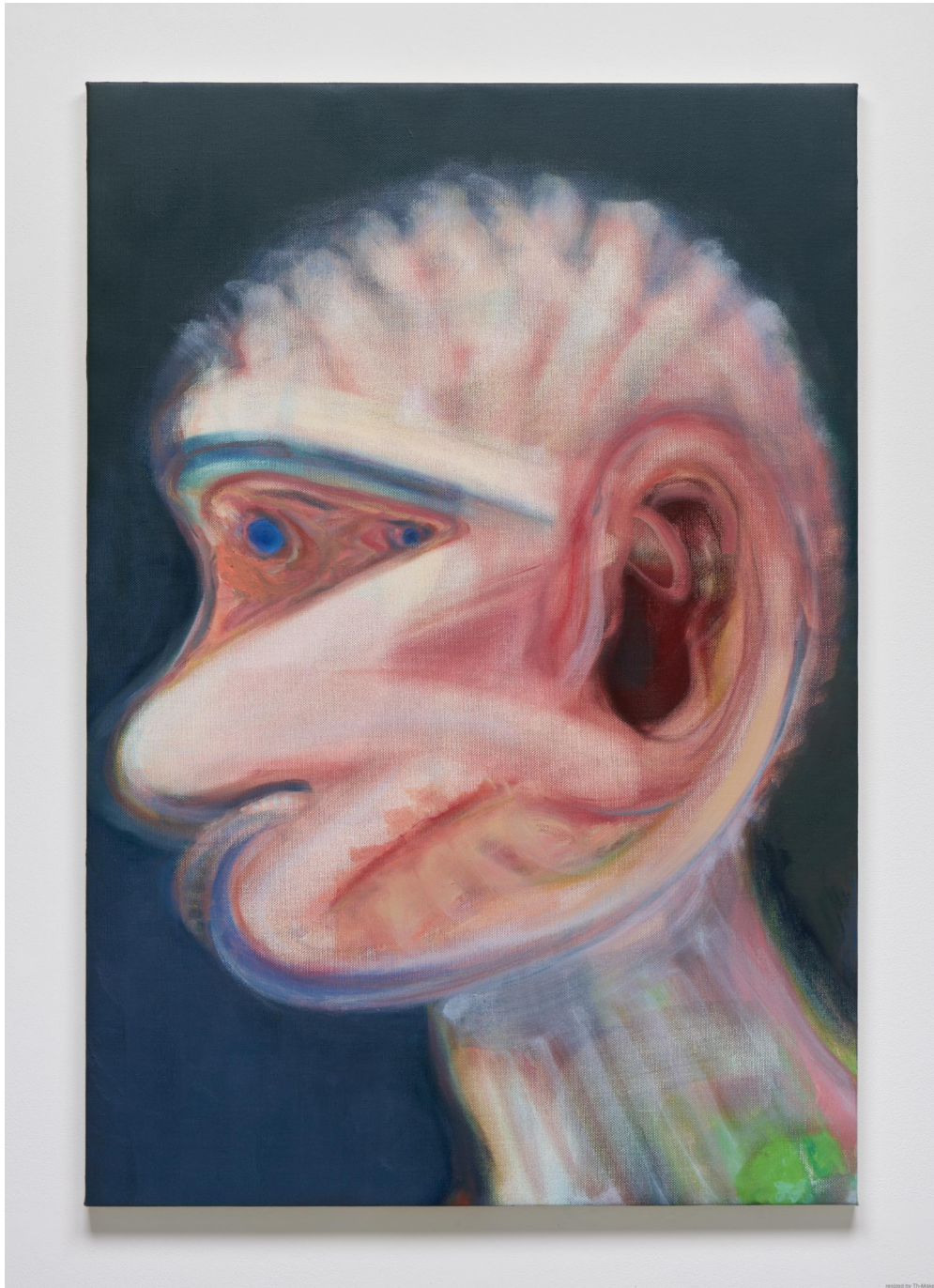
2025

Oil on canvas

H100.5xW80.8cm

Unique

TK-25-005-P



Untitled

2025

Oil on canvas
H130.8xW89.9cm
Unique

TK-25-006-P



Untitled

2025

Oil on canvas
H32.3xW41.5cm
Unique

TK-25-008-P



Untitled

2025

Oil on canvas
H33.5xW25cm
Unique

TK-25-007-P



Untitled

2025

Oil on canvas
H27.5xW27.5cm
Unique

TK-25-009-P

KONISHI Toshiyuki (b.1980)

His recent exhibitions are “The Way of Painting”, Tokyo Opera City Art Gallery (Tokyo, 2014); “Nostalgia and Fantasy: Imagination and Its Origins in Contemporary Art”, The National Museum of Art (Osaka, 2014); “Collection 2 – Diary”, 21st Century Museum of Contemporary Art, Kanazawa (Ishikawa, 2018); “YOKOHAMA TRIENNALE 2017: Islands, Constellations & Galapagos”, Yokohama Red Brick Warehouse No.1 (Kanagawa, 2017); “Collection – Asian Landscapes”, 21st Century Museum of Contemporary Art, Kanazawa (Ishikawa, 2018); “Under Current”, Powerlong Museum (Shanghai, 2022); “Collection Exhibition 1 It knows : When Forms Become Mind” 21st Century Museum of Contemporary Art, Kanazawa (Ishikawa, 2023); “The lens within your heart from the TAKEUCHI COLLECTION”, WHAT MUSEUM (Tokyo, 2023); “A Personal View of Japanese Contemporary Art : Takahashi Ryutaro Collection”, Museum of Contemporary Art Tokyo (Tokyo, 2024) and more.

He was nominated as the finalist for the Prudential Eye Awards in 2016.



(Reference)

“Collection Asian Landscapes”
Installation view, 21st Century
Museum of Contemporary Art,
Kanazawa, Ishikawa, Japan, 2018
photo by KIOKU Keizo
Courtesy of 21st Century
Museum of Contemporary Art,
Kanazawa ©Toshiyuki Konishi



(Reference)

“YOKOHAMA TRIENNALE 2017: Islands,
Constellations & Galapagos” Installation
view, Yokohama Red Brick Warehouse
No.1, Kanagawa, 2017
photo by Ichiro Mishima ©Toshiyuki Konishi